



**FEIN self-drilling
screwdriver**

**SCS 4.8-25
SCS 6.3-19T**



**Self-drilling screws made
easy to handle.**

Powered by innovation





Less effort, more perfection. The professional FEIN self-drilling screwdriver.

Nowadays, the use of self-drilling screws has become a matter of course in the fields of façade construction, roofs and walls, metal and plant engineering – heating, airconditioning, ventilation systems – car assembly and container construction. Faultless processing is only possible with an electric tool providing the correct speed – if the speed is too high, the drill tip burns out. If the speed is too slow, greater effort would be required.

With its optimally designed speed, the SCS 4.8-25 FEIN self-drilling screwdriver ensures safe processing of self-drilling and thread-forming screws with a diameter of up to 4.8 mm – with or without a sealing washer and also for wing teks.

Good force with little noise.

The FEIN HIGH-POWER MOTOR provides for maximum performance also during continuous operation. Due to its high efficiency, this tool is even suitable for screwdriving procedures for which the force of other screwdrivers would not be sufficient. As soon as the job is completed, each driving procedure is finished with a soft ratchet noise.



Universal fields of use.

With its adjustable FEIN universal clutch, the SCS 4.8-25 self-drilling screwdriver is particularly versatile. Used without depth stop, the optimum torque range can be preset on the machine. Optimum results can even be achieved for sensitive screwdriving applications. An additional advantage of this special FEIN clutch system: The torque can also be adjusted by means of contact pressure. We call this "force-sensitive working".



This allows the precision required by professionals.

The adjustable depth stop always ensures optimum screwdriving depth and a perfect fit of the screw. Reliably avoids the necessity of repeating the work.



At a glance:

Screwdriver with optimum speed for self-drilling screws.

- One of the lightest drilling screwdrivers of its type.*
- This ergonomically designed screwdriver allows for fatigue-free and comfortable working.
- Adjustable universal clutch for optimum torque preselection when working without depth stop.*
- Force-sensitive FEIN universal clutch.*
- Relaxed working with a practical hand strap.
- Optimum screwdriving results by means of the depth stop.*
- Stepless electronic speed control for sensitive screwdriving.
- HIGH-POWER MOTOR for unrivalled performance and stability.

* only refers to SCS 4.8-25

For large screws.

One single machine for all applications is not sufficient, as large screw diameters require a significantly lower speed than small diameters. For this reason, FEIN provides a separate self-drilling screwdriver for screws with a diameter of up to 6.3 mm in its product range – the SCS 6.3-19T.

Optimum speed

SCS 4.8-25
up to Ø 4.8 mm



SCS 6.3-19T
Ø 5.5–6.3 mm



SCS 4.8-25

SCS 6.3-19T

Screws Ø	up to 4,8 mm	5,5 to 6,3 mm
Speed, no load	2500 r.p.m.	1900 r.p.m.
Speed, full load	2000 r.p.m.	1300 r.p.m.
Input	450 W	400 W
Output	250 W	220 W
Max. torque	16 Nm	18 Nm
Net weight	1,3 kg	1,6 kg
Cable length	5,0 m	5,0 m
Tool holder	1/4" Ø	1/4" Ø

Part Number

7 213 04

7 210 97

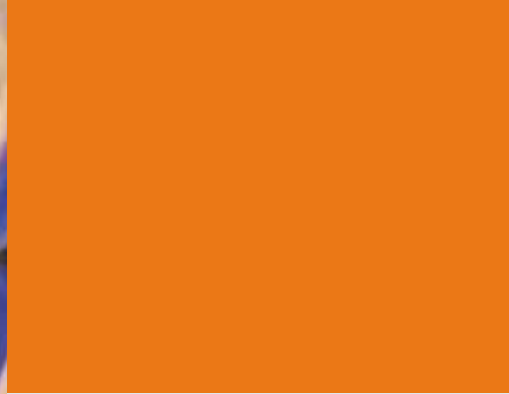


Included in the price:

1 depth stop, 1 magnet holder for 1/4" bits, 1 bit 1/4" for cross-slotted screws size 2 Philips (shape H) extra hard, 1 hand strap, 1 terminal clamp



1 depth stop, 1 insert for SW 8 hexagon head cap screws, 1 hand strap



Feels and handles more easily.

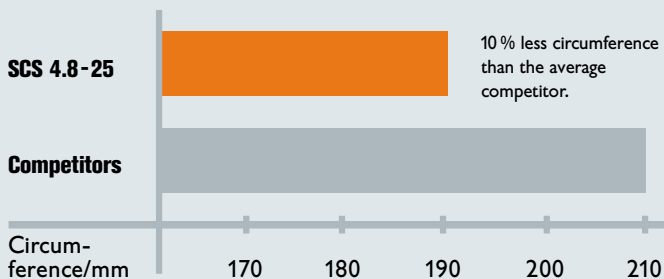


Due to innovative ideas, a leading example of an ergonomically designed tool has been created. Few other self-drilling screwdrivers can match this design's grip circumference of only 190 mm. A benefit you can touch!

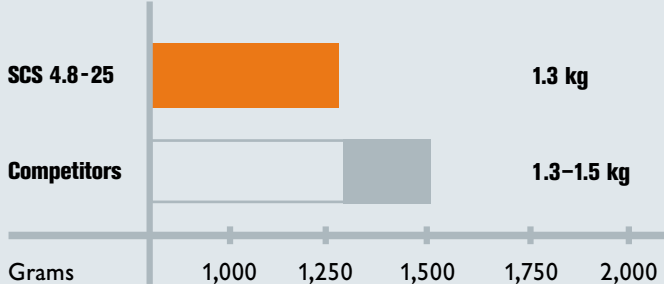
Makes work easier on the construction site.

For fatigue-free working, the weight of an electric tool should be as low as possible. The SCS 4.8-25 self-drilling screwdriver meets this requirement: It is one of the lightest of its type! In addition to this, a practical hand strap provides for relief during non-stop operation.

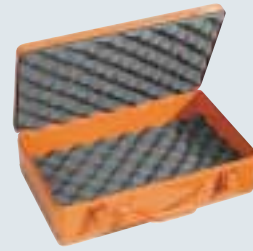
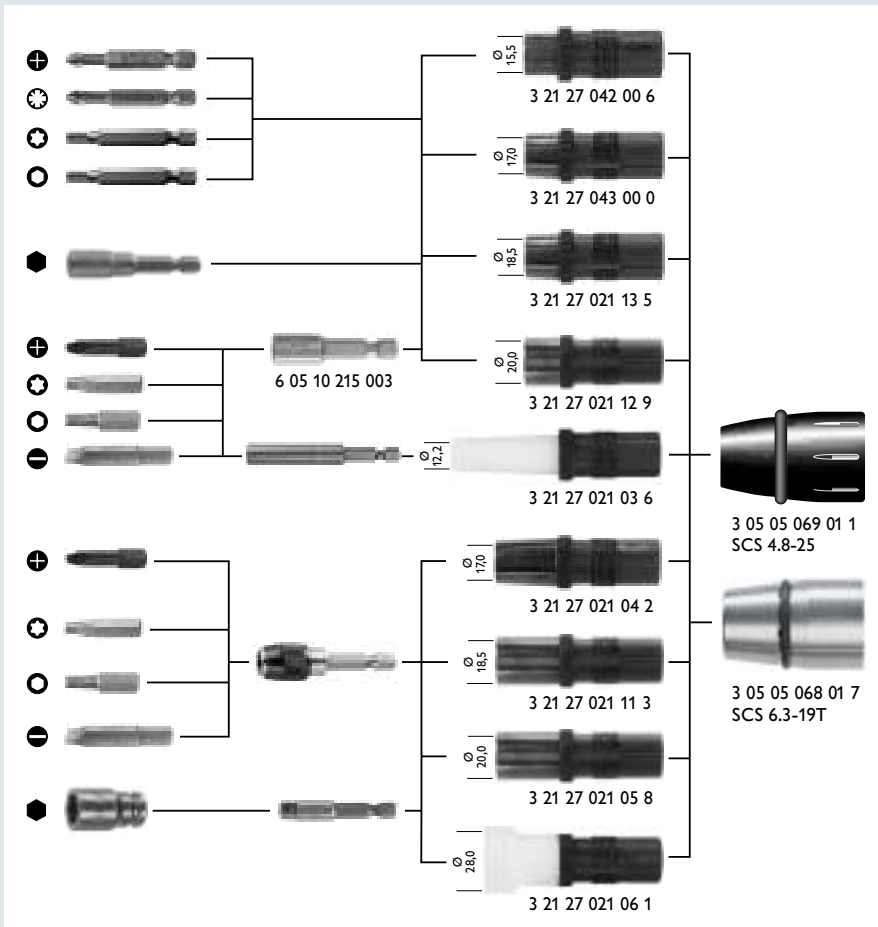
Particularly ergonomic when the switch is actuated



Net weight



Accessories for perfect results.



Tool box, metal
(390 x 240 x 110 mm)
Part Number
3 39 01 067 01 3



Tek-Bit-Box – tool kit
consisting of 34 pieces
presented in a stable box
Part Number 6 05 10 216 01 5

An extensive range of additional accessories is available on request.

For further information, or if you wish to have a demonstration of our tools, please contact your local FEIN stockist.



Germany: C. & E. FEIN GmbH & Co. KG, Leuschnerstr. 43, 70176 Stuttgart, ☎ (07 11) 66 65-0

Great Britain: FEIN Industrial Power Tools U.K. Ltd., 4 Badby Park, Heartlands Business Park Daventry, Northants NN11 5YT, ☎ 0 13 27 30 87 30

USA: FEIN Power Tools Inc., 1030 Alcon Street, Pittsburgh, PA 15220, ☎ 04 12 9 22 88 86

Canada: FEIN Canadian Power Tool Company, 323 Traders Boulevard East Mississauga, Ontario L4Z 2E5, ☎ 09 05 8 90 13 90

Australia: FEIN Australasia Pty. Ltd., P.O. Box 287, Unit 2/ 110 Bonds Road Riverwood N.S.W. 2210, ☎ 02 95 34 35 33

South Africa: FEIN Power Tools South Africa (Pty) Ltd., P.O. Box 1411 Bramley 2018, 1st Floor Delpark House, 77 Fifth Street, Wynberg, Johannesburg, ☎ 0 11 4 44 22 28

Internet: <http://www.fein.com>

Powered by innovation

